

Table of Contents

SMB/SAMBA

Windows

File Explorer

Command Line

..... 1

..... 1

..... 1

..... 1

SMB/SAMBA

Windows

First you will need to get your storage address and credentials from your account in our members area. Then you have many options of accessing your storage over SMB.

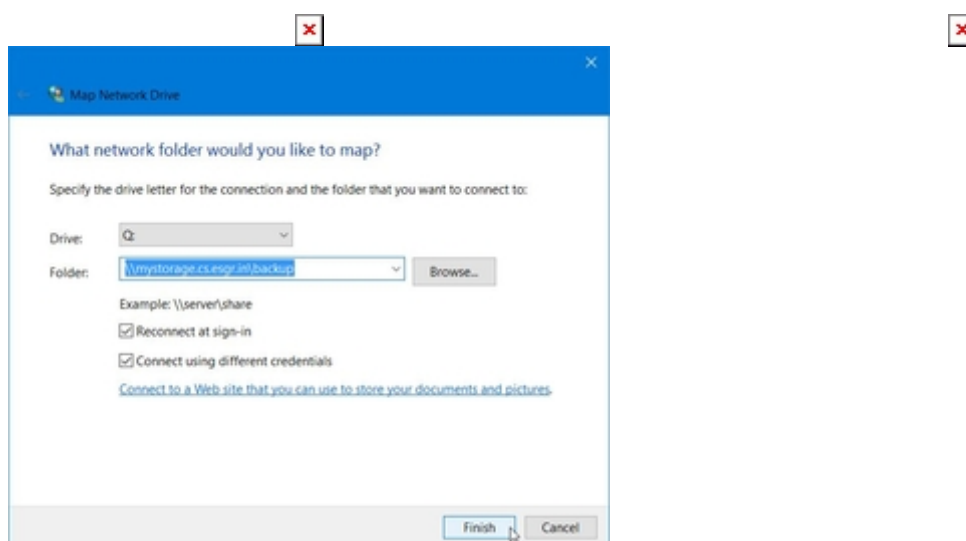
For the following examples we will assume the following:

- Storage Address: **mystorage.cs.esgr.in**
- Username: **user1234**
- Password: **WMacuuvnnxaKuiwBTrn2**

File Explorer

- Open an instance of **File Explorer** from your desktop or start menu
- Click on the **Computer Tab** to make it active
- Click on **Map Network Drive**
- Select the Drive Letter you would like to use
- in **Folder** type:
 - **\\mystorage.cs.esgr.in\backup**
- If you want the drive to reconnect everytime you restart Windows Select **Reconnect at sign-in**
- Click on **Connect using different credentials**
- Click on **Finish**

Windows will ask you for your credentials (Username and Password) and after you enter them correctly it will open your cloud storage in File Explorer.



Command Line

In a console that has administrative permissions:

- `mklink /D C:\%userprofile%\MyStorageFolder \\mystorage.cs.esgr.in\backup`

This will mount the cloud storage in a folder called *MyStorageFolder* inside your user profile.

From:

<https://esgr.in/wiki/> - **eSGR Documentation**

Permanent link:

<https://esgr.in/wiki/storage/smb?rev=1484236935>

Last update: **2017/01/12 16:02**

