

Table of Contents

- SMB/SAMBA** 1
- Windows** 1
- File Explorer 1
- Disconnect Network Drive 1
- Command Line** 2
- Mount as Network Drive 2
- Mount under UNC Path 2
- Linux** 2
- Required Packages 2
- fstab 2
- Protecting the Username & Password 2

SMB/SAMBA

Windows

First you will need to get your storage address and credentials from your account in our members area. Then you have many options of accessing your storage over SMB.

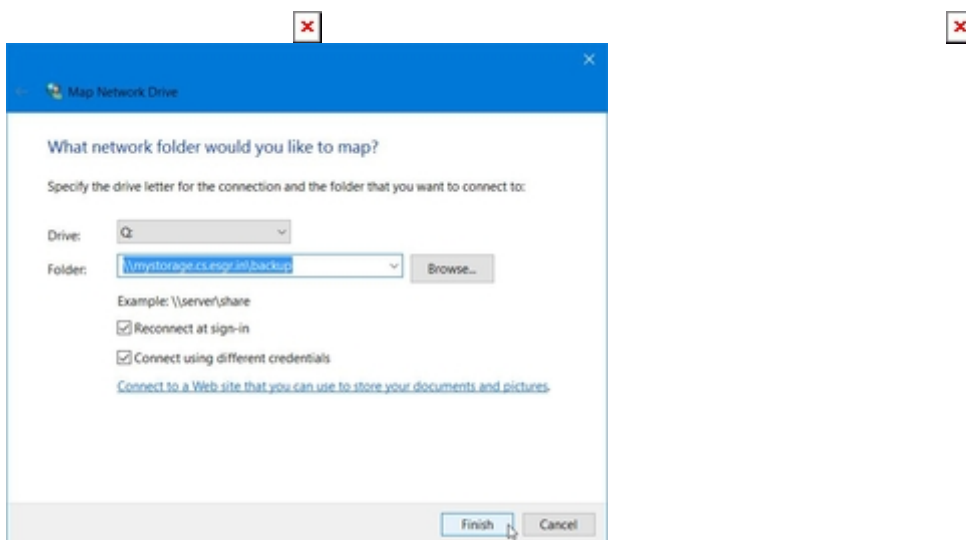
For the following examples we will assume the following:

- Storage Address: **mystorage.cs.esgr.in**
- Username: **user1234**
- Password: **WMacuuvnnxaKuiwBTrn2**

File Explorer

- Open an instance of **File Explorer** from your desktop or start menu
- Click on the **Computer Tab** to make it active
- Click on **Map Network Drive**
- Select the Drive Letter you would like to use
- in **Folder** type:
 - **\\mystorage.cs.esgr.in\backup**
- If you want the drive to reconnect everytime you restart Windows Select **Reconnect at sign-in**
- Click on **Connect using different credentials**
- Click on **Finish**

Windows will ask you for your credentials (Username and Password) and after you enter them correctly it will open your cloud storage in File Explorer.



Disconnect Network Drive

In order to disconnect your network drive:

- Open a **File Explorer**
- Find the Network Drive in the list and right click on it
- Click on **Disconnect**



Command Line

In a console that has administrative permissions:

Mount as Network Drive

```
net use q: \\mystorage.cs.esgr.in\backup
```

This will mount the cloud storage on Drive Letter Q:

Mount under UNC Path

```
mklink /D C:\%userprofile%\MyStorageFolder \\mystorage.cs.esgr.in\backup
```

This will mount the cloud storage in a folder called *MyStorageFolder* inside your user profile.

Linux

Required Packages

```
yum install samba-client samba-common cifs-utils
```

fstab

We will assume your user in the system is **myuser**

Add an entry in your fstab like this:

```
//mystorage.cs.esgr.in/backup /home/myuser/mystorage cifs  
user=user1234,pass=WMacuuvnnxaKuiwBTrn2,icharset=utf8 0 0
```

Protecting the Username & Password

In order to avoid the leaking of username & password you can do the following:

Create the file ~/.smbcredentials:

```
touch ~/.smbcredentials
```

Add the following inside the smbcredentials file:

```
username=user1234  
password=WMacuuvnnxaKuiwBTrn2
```

Change the permissions of the file to be readable only from your id:

```
chmod 600 ~/.smbcredentials
```

Change the fstab entry to be like this:

```
//mystorage.cs.esgr.in/backup /home/myuser/mystorage cifs  
credentials=/home/myuser/.smbcredentials,iocharset=utf8 0 0
```

From:
<https://esgr.in/wiki/> - **eSGR Documentation**

Permanent link:
<https://esgr.in/wiki/storage/smb>

Last update: **2018/01/09 12:28**

